



Finnish Center Association

FCA News

November 2016

FOR MEMBERS OF THE FINNISH CENTER ASSOCIATION

CALENDAR OF EVENTS

NOVEMBER

- 04 Friday Night Buffet 5 - 8 pm (menu page 9)
- 04 Friday Pasty Prep 10 am
- 05 Saturday Pasty Sale 8:30 am - 12 noon
- 05 Rental
- 06 Rentals
- 07 - 09 Rentals
- 09 Wednesday FCA Board Meeting 6:30 pm
- 10 Thursday Nisu/Pulla Baking 9:30 am
- 12 Saturday Scandinavian Bazaar 10 am - 4 pm
- 13 Sunday Brunch Buffet 11:30 am - 1:30 pm
- 13 Sunday Finnish Film, "Letters to Father Jacob" 2 pm
- 13 Sunday Suomi Koulu 12 noon
- 14 Monday Scholarship Meeting 1:30 pm
- 16 Rental
- 18 Friday Night Buffet 5 - 8 pm (menu page 9)
- 19 Rental
- 20 Sunday Suomi Koulu 12 noon
- 27 Sunday Open House 1 - 4 pm
- 30 Wednesday Monthly Luncheon 12 noon (page 13)



**The Center will be closed on
Friday, November 25 following
Thanksgiving**

DECEMBER

- 02 Friday Night Buffet 5 - 8 pm
- 02 Friday Novi Community Band 7 pm (page 13)
- 03 Saturday FCA 50th Anniversary Jubilee & Finnish Independence Day 5:30 pm (see page 6-8)
- 04 Sunday FASM Concert 3 - 6 pm
- 10 Rental
- 11 Sunday Candlelight Service 2 - 4 pm (page 13)
- 11 Sunday Suomi Koulu 12 noon
- 13 Tuesday Little Christmas Concert 7 pm
- 14 Rental
- 14 Wednesday FCA Joint Board Meeting 6:30 pm
- 16 Friday Night Buffet 5 - 8 pm
- 17 Saturday Finnish Christmas Dinner & Children's Pikkujoulu 5 pm
- 21 Rental

**No Sunday Brunch Buffet, Monthly Luncheon or
Open House in December**

Weekly Events

- Finnish American Singers
Mondays 7 pm
- Library
Open Monday 10 am-2 pm
- Nikkarin Talo
Mondays 9 am
- Finlandia Garden Club
Mondays 9 am

Monthly Events

- Finnish Conversation
1st Friday of the month 10 am
- Sunday Brunch
11:30-1 pm
- Book Club
Last Monday of the month 1 pm
- Luncheon
Last Wednesday of the month
12 noon
- Open House
Last Sunday of the month 1-4 pm

CHAIRMAN'S CORNER

Celebrations for our 50th Anniversary started last month with our Folk Art Day. It was nice to see all the different craftsmen presenting their skills. We had many crafts represented along with a fun folk dance demonstration and a Finnish National Costume showcase. A Finnish themed lunch was served as well, which was very popular. We ran out of few items!

The food demonstration in October with Beatrice Ojakangas was a much anticipated event highlighted by the luncheon following day.

Preparation for our 50th Anniversary Jubilee on December 3 beginning with a 5:30 pm cocktail hour followed by dinner are being confirmed. The Honorable Manu Virtamo, the newly appointed Consul General of Finland in New York is going to be our guest speaker. This will be followed with a dinner. Our Honorary Consul Mr. Paul Potti will talk about the Finnish Center. He has been involved with it since the very beginning. His father Mr. Noah Potti was the first chairman of the center.

Ms. Ruusamari Teppo, a great-great-granddaughter of Jean Sibelius and an accomplished pianist, will perform with our Katri Ervamaa, a cellist, music by Sibelius and Rautavaara. It was only last year that the whole world including FCA celebrated the 150th Birthday of Jean Sibelius. This music performance will most certainly honor our first 50 years in a most distinguished manner.

Suomi Koulu children are active despite the lack of a teacher. The parents have stepped up and organized activities, the next one being a Halloween party followed by our "Pikkujoulu". We hope to have a teacher by the beginning of the year. The adult classes are starting in the beginning of November.

November is the also the month we have our annual Bazaar held November 12, 2016. Please keep this in mind and let your friends and neighbors know. The gift shop has been stocking up for this event and we hope to have a great turnout. Pasties and baked goods are also being sold at the event.

Hope to see you all at the Center. Thanks to all who have volunteered in making our many functions a possibility. Many members never see volunteers who make all these events a reality. A special thanks goes to Jim and Nancy Lee who help in setting up for the events. They are true Finns with very positive attitude doing what needs to be done and asking for nothing. Kudos to them.

Looking forward to a fun fall and winter at the Finnish Center.

Mia Lamminen,
Chairman



Mia at Folk Art Day



35200 W. Eight Mile Road
Farmington Hills, MI
48335-5108
Tel: (248) 478-6939
Fax: (248) 478-5671
finnishcenter@gmail.com
www.finnishcenter.org

Officers

Mia Lamminen, Chairman
Roger Wanttaja, Vice Chairman
Robert Waissi, Secretary
Marlene Ruuskanen, Treasurer

Board of Trustees

1 Year

Lila Ball, Mia Lamminen,
Margaret Laurila

2 Year

Olli Lamminen, Henrikki Pantsar,
Marlene Ruuskanen

3 Year

Cynthia Haffey, Robert Waissi,
Roger Wanttaja

Alternates

#1 Carol Tudball
#2 Lois Makee
#3 Wayne Walli

Financial Review

Fran Fadie, Eunice Gould,
Sarah Wiideman

Committee Chairpersons

Building & Grounds

Roger Wanttaja

Cultural

Yvonne Lockwood

Education

Katri Ervamaa

Finance

Olli Lamminen

Gift Shop

Mary O'Brien

Mailing

Alice Manley

Membership

Anu Pantsar

Publicity & Publications

Fran Fadie

Social

Lila Ball

SENIOR CITIZEN HOUSING CORPORATION

Paul C. Hendrickson, Chairman

Tapiola Village

Laura Fultz, Manager
(248) 471-3802

Tapiola@ameritech.net

Freedom Square

Theresa Show, Manager
(248) 442-7250

www.fcaseniorhousing.org



FROM THE LIBRARY

SUGAR ISLAND SAMPLER

by Bernard Arbic



I had not heard of the book although it came out in 1992. I knew there was such a place. Ira Harju wrote about Neebish Island where she lived for seven years as a child. Sugar Island was known for sugar plums and maple syrup.

Samplers will taste wine or cheese or varieties of foods for a baking or cooking contest. A sampler is also defined as a piece of embroidered fabric in various kinds of stitching as a specimen of skill. Bernard Arbic's collection of stories and facts can be termed a sampler. His account of life on this 47.9 square mile island positioned on the St. Mary's River is essential to the history and the development of many of the border states, and can be identified by those of us whose parents and grandparents lived it.

The book is a lesson in cooperation among the inhabitants who needed to share their ways of coping with the isolation and difficulty with necessary travel. One family might have a boat, another a horse or car, etc. These resourceful settlers needed to trust each other to survive. A sick child would have been a major crisis.

You will read about:

The teachers were given a place in the community and provided room and board. They were treated with respect and given choices of how they would conduct their classes. Schools were spaced so that no child needed to walk too far to get to school. Terms were flexible as to weather and the time of year to help the students to fulfill the education requirements.

Shared activities:

Build a Road Day

Lighter boats, why and what they lightened.

Sending hay to the horses in Kentucky.

Harvesting ice which was sometimes sold to businesses at the "Soo".

Transporting milk cows, sheep and goats.

Many business and industries have been successful there. Some had to leave for family reasons. Others were recruited by the Karelia Project for commercial living and working. Many returned due to discouragement and feeling they had responded to false promises. Some were never seen again.

A bridge to the mainland was considered. It was not approved by the majority. It was more important to keep their peaceful living and clean environment. They opted to build more roads for the cars which were brought over by ferry.

Mr. Arbic has included countless first-hand stories from residents with good memories. He spent much of his youth living and vacationing where he acquired a special feeling for the land and its people.

Through the years of crossing the Mackinaw Bridge and turning west (every summer) only once did we turn to the easternmost tip of the U.P. covered by the author. Many years ago when our children were old enough to not object to their usual summer vacations on the farm with relatives, we surprised them with a trip to Cedarville. They stopped complaining when we found the little cabin in the woods with a path going down to our own private lake, for one week. Our row boat was waiting. We had fresh fish for dinner. No

(continued on page 4)

LIBRARY (continued from page 3)

one needed to keep a conversation going. We were all into ourselves, savoring the peace and quiet. We didn't need to go back. It might have changed the memory because a second time would not be as exhilarating as the first.

Sugar Island is inhabited by the Native Americans, namely Chippewa, French Canadians, English and Finnish. Most respected the land and left things, if anything, better than they found it. You will read about religious life, several churches that were built, and also the Sugar Island Township Community Center.

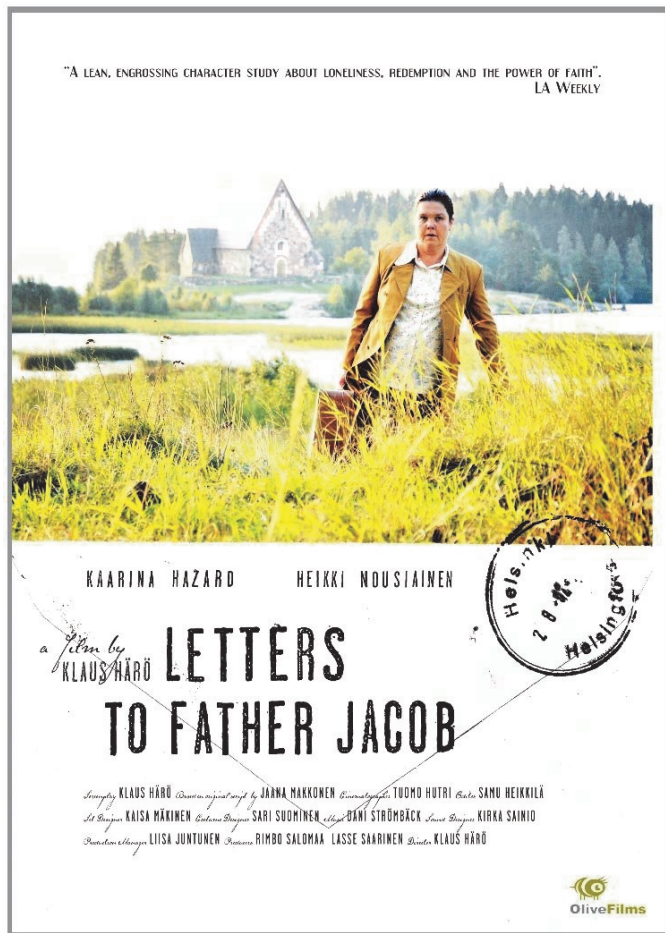
The Osborn Preserve is a stay in itself. It consists of 3,000 acres, about 10% of the island, and was donated in 1929 to the University of Michigan.

Sugar Island was called International Island for a time (1946) when it was one of many candidates to become headquarters of the United Nations.

This book is available in the library.

Ruth Ojala, Library Volunteer

SUGAR ISLAND SAMPLER



FINNISH FILM SERIES CONTINUES

Sunday, November 13
2:00 pm

Letters to Father Jacob
Postia Pappi Jaakobille
Klaus Härö, Director



2009

After serving 12 years of a life sentence, Leila is pardoned and released from prison. She begrudgingly accepts a job at a secluded, rather rundown parsonage as the personal assistant to the blind pastor, Father Jacob, whose life's mission is to answer the letters from parishioners in need of prayerful intercession on a variety of problems. Dutifully reading these pleas to her frail employer, Leila appears unmoved and even contemptuous. Too proud to ask for help herself, she can barely comprehend this outpouring of vulnerability. Ultimately, Father Jacob's correspondence plays a role in Leila's own redemption and self-forgiveness.

MEMORIALS

In memory of FCA member **Audrey Sakkinen Heikkila** (9/7/16) a donation has been made by Paul & Lillian Lehto.

In memory of FCA life member **Toini Kesti** (8/28/16) a donation has been made by Neil Manley.

In memory of FCA life member **Doris Heikkinen** (8/25/16) donations have been made by Maria Hill and Kathryn Hill.

In memory of FCA life member **Elvi Saviniemi** (8/19/16) donations have been made by Maria Hill and Susan O'Leary.

In memory of FCA life member **Elsie Kauppila Ahonen** (6/25/16) a donation has been made by Ray & Pearl Wanttaja.

In memory of FCA life member **Willi Rajala** (6/28/16) donations have been made by George & Mary Leviska, Lois Makee, John Malmstrom, Charles & Elaine Lada, Thomas & Kathryn Kozak, Thomas & Sallie Herman, Dorothy B. Maki, and Gene & Marilyn Kramer.

In memory of FCA life member **Rafael Saviniemi** (5/30/16) a donation has been made by Lois Makee.

The FCA would also like to express condolences to the family and friends of the following:

FCA life member **Rosemary Hella** (6/8/16)
 FCA member **Richard "Dick" Maki** (7/11/16)
 FCA member **Doris Mollo Heinonen** (7/16/16)
 FCA life member **Doris Heikkinen** (8/25/16)

When making a memorial donation, you may direct it toward a specific fund. The funds available are: FCA General Fund, Library, Scholarship, Hoijakat Folk Dancers, Finn Weavers, Garden Club, Happiness Fund, FinnFolk Musicians and Finnish American Singers. If a donation is undesignated, it goes to the General Fund for expenses of the Center.

Please make your check out to the Finnish Center Association and send donations to: **FCA, 35200 West Eight Mile Road, Farmington Hills, MI 48335.**

Also include all names of donors. If the deceased is a non-member of the FCA please include city and state of residence.

You may also direct your donation toward the Senior Housing, but then your check must be made out to FCA Senior Housing Corp.

Please include full name, address, and date of death of the deceased as well as the name and address of the next of kin to whom the acknowledgement card is to be mailed.

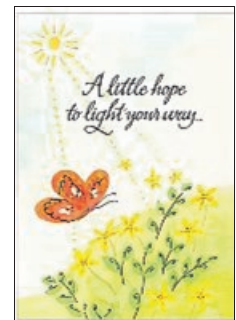


GET WELL, THINKING OF YOU

Sending get-well cards, thinking-of-you cards and words-of-encouragement cards to FCA members.

Please notify me if you think someone might need warm and thoughtful wishes from the friends at the FCA. Send or call your card requests to the attention of the "Sunshine Lady" at the FCA.


Thank you,
 Eunice Potti Gould



SUNDAY BRUNCH BUFFET

November 13
 11:30 am - 1:30 pm

Adults \$10, Children (12 & under) \$5. The Finnish film *Letters to Father Jacob* will be shown at 2 pm following the brunch. See more information about the film on page 4 of this newsletter.

The background of the page features a large, stylized Finnish flag. The flag is white with a blue cross, and a red shield with a yellow lion is positioned at the center of the cross. The flag is set against a light blue background with a subtle pattern of water ripples.

50th ANNIVERSARY JUBILEE &
FINNISH INDEPENDENCE DAY PARTY
SATURDAY DECEMBER 3, 2016
At 5:30 pm

at the Finnish Cultural Center

Guest speaker:
Consul General of Finland Manu Virtamo

Tickets \$ 25.00 per person
Children (4-16) \$10.00

Dinner includes Finnish favorite foods
Cash Bar open

Program includes music by Ruusamari Teppo, Piano
and Katri Ervamaa, Cello

To make reservation, please call the FCA office
248-478-6939
by November 26, 2016

Bring your family and friends
TERVETULOA/WELCOME

50th ANNIVERSARY JUBILEE & INDEPENDENCE DAY SPEAKER & PERFORMER BIOGRAPHIES

Manu Virtamo assumed his duties as the new Consul General of Finland in New York on September 1. Mr. Virtamo and his wife, Liisa, moved to New York from another hectic city, Tokyo, where Mr. Virtamo served as the Ambassador of Finland to Japan for the past three years.

Mr. Virtamo has a long career with the Finnish Foreign Service. He has been posted in Stockholm, Washington D.C., Los Angeles, Tokyo and now New York. In Helsinki he has served, among others, as Special Assistant to two different Trade Ministers and four Under Secretaries for Trade. For the last five years before his assignment to Tokyo he served as Coordinator for Export Promotion and Investments at the Ministry's Department for External Economic Relations. In that position he was part of the group that developed the Team Finland concept which basically means putting all Finnish agencies together for promoting Finnish business and country image abroad.



Manu Virtamo and his wife, Liisa

Ruusamari Teppo began her piano studies at the age of four in her native country, Finland. After completing her studies at the prestigious Sibelius High School, she studied piano in Paris for 3 years. Following that she was awarded a scholarship by the Finnish government to study piano at the Prague conservatory and the Franz Liszt academy of music in Budapest. She was awarded a two-year artistic certificate program from both places. After that Ruusamari moved to the United States to study with world renowned pianist and pedagogue Vladimir Viardo. She is currently pursuing her doctoral degree at the University of North Texas.



Ruusamari Teppo

Ruusamari has performed as a soloist and chamber musician in the USA, Finland, Germany, France, Czech Republic, Hungary, Italy, Estonia, Belgium, and South Africa. She has won second prize in the Bradshaw and Buono international piano competition and the Petrof piano competition. Ruusamari has performed and participated in several music festivals including: Kuhmo, Naantali, Turku, Karjaa, and Inkoo music festivals in Finland, Portogruaro and Tarvisio in Italy, Stellenbosh in South Africa and Moulin D'Ande in France.

Recently Ruusamari has been touring with a Finnish cellist Jussi Makkonen in the United States and in Finland. This year there have been thirty concerts all around the US organized and sponsored by the Finlandia Foundation. The concerts are part of the Sibelius Jubilee 150 year anniversary concert series.

Ruusamari began teaching at an early age and has been working with students from different age groups from beginning to more advanced levels. Her students have been winners of Dallas, Frisco and Plano Trophy competitions. Ruusamari won first prize in the TMTA pedagogy competition held at SMU in Dallas.

(continued on page 8)

Biographies (continued from page 7)

Finnish-born cellist Katri Ervamaa, DMA, is a versatile performer, who specializes in chamber music, new music and creative improvisation. She has performed and given master classes throughout North America, Europe and Taiwan. Her festival appearances include the Orlando, Kuhmo, Bowdoin, Lycka and Norrtälje Chamber Music Festivals (with the Finnish Owla String Quartet) as well as the Denison University Tutti New Music Festival, Poison City Music Festival, Walla Walla Chamber Music Festival and Finnfest, among others.

She has also performed at Ann Arbor's Edgefest with Lars Hollmer's Global Home Project, Guy Kluscevic, Mark Kirschenmann, E3Q, Andrew Bishop and Ed Sarath. She studied cello with Erling Blondal Bengtsson, Marc Johnson, Kazimierz Mikhalik and Lauri Laitinen. Katri is a founding member and past president of Brave New Works new music ensemble (bravenewworks.org), the Muse string trio and E3Q, an improvisation-based-genredefying trio with her husband Mark Kirschenmann and percussionist Michael Gould. She appears on Envoy Recordings, Block M Records, and AMP Records labels.

In addition to her lively performance career, Katri is on faculty at the University of Michigan's Residential College, where she is the head of the music program and teaches chamber music. She has also been on the cello faculty at the Eastern Michigan and Bowling Green State Universities. Katri is a mother of three and lives in Ann Arbor, Michigan with her family. Katri plays on a 1868 HC Silvestre cello, and you can find them online at www.katrimusic.com.

GIFT SHOP

The holidays are rapidly approaching. We have been preparing for them in the gift shop. Orders have been coming in every few days. We have squeaky cheese and herring for those special events. Iittala is here for those special gifts. We have new books and jewelry. Please stop in your gift shop for those holiday gifts.

If we don't have something you want be sure to let Mary, Amy, Sharyl or Margaret know, we will be glad to order for you. We want this to be the best holiday for you.



Special of the month,
Herring 10% off

See you at the Scandinavian Bazaar!

Mary O'Brien

FCA SENIOR HOUSING REPORT

A contract agreement has, at long last, been signed and architect Carl Hueter of Ann Arbor has begun Phase I of the analysis for renovation of Tapiola I & II. Delays have pushed his inquiry phase well into October.

During the brief period of discovery, the architect will be onsite, measuring, inquiring and photographing but, with few disruptions to the residents of Tapiola I & II.

Results of the analysis along with recommendations for renovations are expected to be presented at a board meeting, and hopefully, by year's end. Meeting date and time to be posted and all interested FCA members are encouraged to attend.

Renovation Committee
Chair, Sarah Wiideman



FRIDAY NIGHT BUFFET MENUS



November 4

Italian Chicken
Baked Cod
Pasta Alfredo
Broccoli
Salad & Rolls
Vegetable Soup



Members of FinnFolk will be playing during dinner!

November 18

Polish Sausage & Kraut
Swedish Meatballs over egg noodles
Carrots
Salad & Rolls
Barley Soup

NOVEMBER IN THE GARDENS

The vegetable gardens are shut down for the year, the raspberries are almost done, and the Halloween decorations will be put away in anticipation of Thanksgiving decorations to be placed out. The batch of unusually warm weather in October delayed planting of our tulips until later in November as consistently cooler temperatures (under 50) are needed before planting. We will plant red, yellow, and red with yellow Darwin variety tulips as this variety is known to reliably re-bloom for up to 10 years and sometimes multiply. Now if only the deer would stay away when they bloom!

The garden club took the lead in the repainting of the new building doors and they look good. The buildings and grounds are shaping up for the 50th anniversary celebration coming up soon. If you have the opportunity, take a walk around before the winter snows start. If there are any changes you might like to see in the gardens next year, just drop a suggestion in the Garden Club box in the office or stop any of the members. We review all comments and suggestions.

We were awarded another Beautification Award by the city of Farmington Hills on October 27th. This is our 12th year in a row for this award. You will be able to see all this great publicity on local cable television.



If you have any questions, comments, or donations, you can contact me at (734) 546-5190 or email me at gaylegullen@hotmail.com.

Gayle Gullen, Finlandia Garden Club President

FCA BAKERS

Bakers are needed on Thursday, November 10 at 9:30 am to bake nisu/pulla and Christmas tarts for the Scandinavian Bazaar. Many hands will make light work. Please consider coming for part or all of the day. We look forward to seeing you.

Kiitos, Ilene Yanke



If you wish to extend a holiday greeting to a friend or loved one, submit the full name by Friday, November 18. Greetings will be published in the December issue of the FCA Newsletter. Greetings are \$10 each.

NOVEMBER PASTY TIME

We are baking pasties again. On November 5th you can get fresh pasties from the FCA ovens. To order, just send an email fca-pasties@comcast.net. Provide your name, phone number, and the quantity of pasties you would like. The cost is \$6, but you can save 50¢ per pasty by ordering 10 or more. **All pasties must be picked on Saturday, November 5, between 8:30 and noon.**

We need volunteers to help with the peeling and dicing of the vegetables on Friday, November 4. Be at the FCA around 10 am. On the morning of Saturday the 5th there is an opportunity for you to be a part of the baking, assembling, packaging, and cleanup crews. Email me at prajala@comcast.net and I will be happy to find a task to fit your talents, although most tasks do not require special skills. Your reward for volunteering is a complimentary pasty and the satisfaction of providing support to the mission of the Finnish Center.

Paul Rajala, FCA pasty coordinator



SWEA® MICHIGAN PRESENTS ITS 26th ANNUAL

Swedish CHRISTMAS FAIR

Saturday November 19, 2016

9:30 AM - 2:00 PM

Admission \$2, Children under 12 Free

Lucia Pageant at 11:00 AM and 1:00 PM

Swedish Food • Home-Baked Goods
Swedish style Waffels • Glögg, Coffee & Soft Drinks
Personalized Gingerbread Cookies
Great Live Music • Open-Faced Sandwiches
Imported Craft and Goods from Sweden
and a Children's Craft Corner!

New Location!

Finnish Cultural Center, 35200 West Eight Mile Road
 Farmington Hills, MI 48335



SWEA Michigan is a non-profit organization supporting various Swedish cultural and educational activities. For more information, call (734) 546-5801 or send an email to jubassar@sweamichigan.org. Sign up for our Christmas Fair eNewsletter at www.sweamichigan.org!

FINNISH AMERICANS SINGERS & MACOMB SYMPHONY ORCHESTRA

Friday, October 7, the Finnish American Singers of Michigan, with extra singers from the FCA, the Arpi Chorus from the Swedish Club, and a few interested non-singers climbed aboard an elegant touring bus for a trip to the Macomb Center for the Performing Arts in Clinton Township. Several meetings with Thomas Cook, the director of the Macomb Symphony Orchestra, and a month of practices with all of the singers was about to culminate in a concert with the orchestra featuring music by Finnish composers. Glimpses of Finnish culture provided by FCA representatives were displayed and for sale in the lobby.

With our choir numbers swelled to about thirty, we performed three songs familiar to most of us because they are songs the FASM sing at every concert: *The Star Spangled Banner*, *Maamme*, and *Finlandia*. We also sang *Onward Ye Peoples*, a difficult but powerful song by J. Sibelius. The latter two pieces were part of a larger work that the orchestra played. It was definitely a different experience to be accompanied by woodwind, brass and string instruments. When the tympani player suddenly joined with the rest of the orchestra, some singers sitting near them reacted with reflexive jumps! Although the choir, seated behind the orchestra members were not able to hear our amplified singing, we have been reassured by audience attendees that the effect was full and sounded wonderful! After intermission, the singers were able to sit in the auditorium and enjoy the rest of the concert.

Not only were the Finn Folk, in traditional dress serenading observers and buyers during pre-concert and intermission periods in the lobby, the concert flag carriers, Austin Strowbridge and Kristin Kreiner as well as three singers proudly wore colorful historic Finnish dress. Thanks to all that supported and took part in this exciting experience. (see photos on page 12)

Submitted by Katy Koskela, FASM Scribe



LAINA KEHUS LAMPI

Laina Kehus Lampi was one of the founding members of the Finnish Center.

Born in Tapiola, Michigan, to immigrant parents, Laina and her siblings were very proud of their Finnish heritage.

Upon graduation from high school, Laina and her girlfriends moved to Detroit as that is where the jobs were. When Mr. Richard Rantamaki heard Laina was moving he gave her the name and phone number of his friend, Martin Lampi, who had also moved to Detroit. Laina called Martin and the rest is history!

Laina married Martin on November 19, 1938 and became an integral part of his Finnish social circle. Laina was active in Finnish and Scandinavian organizations holding many offices and supporting their programs.

There was talk of needing a Finnish organization in the Detroit area. On November 19, 1963 Aira and Urho Kuusisto hosted a meeting in their home to get such an organization started. Laina refused to attend the meeting as this was her 25th wedding anniversary. As Martin was an invalid he could not attend and she did not want to leave him alone. Aira called and begged her to attend -- every positive voice needed to be heard! So, Laina attended and the people present agreed to get this organization started.

(Until her death Laina rued her decision to attend. A group of people from their church surprised Laina and Martin with a 25th anniversary celebration and Laina missed the entire event. Martin died that year on December 25, 1963.)

The Kuusistos plunged headlong into this project. Aira set up a gift shop in her home selling Finnish imports. Aira, Laina, and a few others would make regular trips to Toronto, Canada to purchase imports. Laina helped Aira with the gift shop doing inventory, displays, and selling when Aira could not be there.

In addition to fundraising, this group of Finns had to locate and inform as many Finnish people as they could about this new organization. Having a letter of explanation ready to mail out they went through telephone books from the Detroit area page by page and sent the letter to anyone with a Finnish name. Finally, someone (maybe Noah Potti) had a mailing list of Finnish people in the Detroit area and shared this list with the group. This job became much easier!

Meetings and fundraisers were held on a regular basis and plans progressed. Renting facilities was expensive and they were not always available when needed. Plans for a permanent Finnish center became very important.

It was also determined that to attract and keep members this new organization needed to encourage people to join various sub-groups within the organization. Laina participated in many of these groups her favorite being the FinnWeavers. Just like today, if a member expressed an interest and possible need for a group they were encouraged to do so.

Laina was very proud of the Finnish Cultural Center. They started small, worked hard, made major decisions, had some set-backs, and learned a lot.

The Finnish Center continues on today because of loyal, hardworking members displaying their SISU and meeting the current needs of their members. Today's members do not want to let the work of their predecessors, begun half a century ago, to be forgotten. And like the founding members, they vow to carry on and to keep many of Finnish traditions alive for future generations.

Finnish American Singer of Michigan perform with the Macomb Symphony Orchestra "Finlandia"



Macomb Center for the Performing Arts Concert
 Top: Finnish American Singers with Orchestra, Tom Cook, Conductor.
 Center left: Roger Hewlett, Don Reinholm and Kristin Kreiner perform in the lobby before the concert
 Center right: Austin Strowbridge presents the flag of Finland
 Below left: Charlotte Lytikainen, Ilene Yanke & Dee Abersold
 Below right: A different perspective - singers' view from back of stage looking out to the audience





SCANDINAVIAN BAZAAR
SATURDAY, NOVEMBER 12
10 AM – 4 PM

**\$1 donation
at door**

Finnish Center Association
 35200 W. Eight Mile Road
 Farmington Hills, MI 48335
 (248) 478-6939 or (734) 834-6085

**Public
Welcome**

Featuring:

Norwegian, Swedish, Danish, Icelandic and Finnish Imports and Crafts, Baked Goods, Pastries, Food, Hand Woven Rugs, Decorative Arts, Pottery, Lavender Soaps and Lotions, Crafts and more.....You can also enjoy good Scandinavian food and listen to music by Finnfolk.

NOVI COMMUNITY CONCERT BAND



Friday, December 2
 Buffet Dinner and Concert \$12
 5 - 8 pm
 Concert Only \$5
 Concert Begins at 7 pm

CANDLELIGHT SERVICE



Sunday, December 11
 2:00 pm



This is the third annual candlelight service in remembrance of loved ones during the holiday season. Donations will be accepted for angels that will be placed on a tree. Please send donations made payable to the FCA with candlelight service in the memo.

SOCIAL COMMITTEE

Wednesday, November 30
 Noon



Menu: Pasty
 Salad
 Dessert

Please come to share a meal with friends.

Lila Ball

SAVE THE DATE!
"LITTLE CHRISTMAS" CONCERT

Tuesday, December 13
 7:00 pm





FINLAND TODAY



First, again this year, just like last year, Finland tops the World Economic Forum's (WEF) Human Capital Index (HCI) list. What does this mean? It means that Finland is the top country in the world in "maximizing and leveraging its human capital potential." The HCI praises Finland for its "well-educated young population with a near-universal basic education survival rate and the highest score for the quality of its primary schools." The WEF's survey claimed that "Finland has the greatest ease of finding skilled employees in the world." Also making the top 5 list were Norway, Sweden, Switzerland and Japan. The rest of the top ten countries were European, along with New Zealand and Canada. The USA was 24th.

The Fragile States Index (FSI), suggests that "Finland is the most stable country in the world." The ranking is published by the Washington based NGO Fund for Peace, along with the Foreign Policy magazine. The index rates 117 countries using 12 indicators. Ranked on the top of the list in the "Very High Alert" category (with 110-114 points) are a half dozen African countries, with Somalia seen as the most fragile. At the other extreme, the "Sustainable" group (21-30 points) are 13 European countries--including the other 4 Nordic countries, along with New Zealand, Australia, and Canada. Standing alone in a separate "Very Sustainable" category with 18.8 points, is Finland. The 12 indicators include demographic pressures, economic decline, inequality, public services, the rule of the law, and external intervention.

A Finnish economist Bengt Holmsstrom and an American, Oliver Hart, share this year's Nobel prize for economics. Says the Royal Swedish Academy of Science of Holmsstrom's and Hart's work: "lays an intellectual foundation for designing policies and institutions in many areas, from bankruptcy legislation to political constitutions." Holmsstrom, 67, was born in Helsinki and has been professor of economics at the Massachusetts Institute of Technology since 1994.

A new elementary school curriculum in Finland is a source of confusion in many homes this autumn, according to Finland's largest daily, the Helsingin Sanomat. The newspaper breaks the changes down to 5 categories: **Projects:** During the school year, each pupil will be required to carry out at least one cross-disciplinary project. This is aimed at bringing together and combining skills learned in different subjects. **Grading:** It will still be possible to give elementary students grades, but many schools will be introducing oral and written evaluations. **Classrooms:** There will still be classrooms, but learning will not necessarily take place at the pupil's desk. **Language teaching:** Children will start with Swedish and English lessons at an earlier age, and the emphasis is increasingly on practical use of languages. **Discipline:** In place of traditional after-school detention, the new curriculum favors "softer" means of discipline, such as discussions.

And finally, Hilma walked into the kitchen to find her husband, Heikki, stalking around with a fly swatter.

Hilma: What are you doing?

Heikki: Hunting flies.

Hilma: Oh! Killing any yet?

Heikki: Yep, three males and two females.

Hilma: How can you tell them apart?

Heikki: Well, very easily, the "three" were on a beer can, and the "two" were on the phone.



Thanks, Paul Scott

Markku Ketola
marketola@yahoo.com





A CELEBRATION IN FINNISH GOLD

Gold

Finnish gold.

Golden memories of families and friends

blending together in remembrance and reminiscence.

Success in sustaining the cultural legacy of our loved ones.

Unique customs and traditions collected in a location of dedication.

Fifty years of golden achievement with contrasts of difference.

Sustaining and maintaining during loss and waning.

Building forward through trial and struggle toward cultural fulfillment.

Fifty years of Finnish attainment.

Fifty years of Finnish gold.

by David Hyry Sharpe

ADVERTISING RATES

DEADLINE:

DEADLINE FOR DECEMBER ISSUE IS NOVEMBER 5TH

EDITOR CONTACT INFO:

PAUL RAJALA

LAYOUT AND DESIGN:

NANCY RAJALA

E-MAIL:

nrajala@comcast.net

FCA NEWS ADVERTISING RATES & SPECIFICATIONS

FCA News is published 11 times annually (June-July issue is combined) by and for members of Finnish Center Association. Circulation is about 1,000 of your fellow FCA members, and others, per issue, and unknown numbers online.

Deadline/payment for ad is the 5th of the month preceding publication.

Column (ad) width is 2-1/4" for rates quoted below. Other sizes quoted on request.

Rates for a camera-ready, black & white ad, per three month period:

3 month rate 1" ad - \$30.00. 1.5" ad - \$45.00 2" ad - \$60.00

Pay for full year 1" ad - \$100.00. 1.5" ad - \$150.00 2" ad - \$200.00

Photos: B&W photo ads incur a one-time charge of \$25.00 payable at first insertion.

READ THE FCA NEWSLETTER ONLINE

FINNISH CENTER ASSOCIATION



35200 W. Eight Mile Road
Farmington Hills, MI 48335-5208

Prsrt STD
U.S. Postage
PAID
Farmington, MI
Permit NO 250

Current Resident or

FCA MEMBERSHIP APPLICATION OR ____ RENEWAL

Date _____ Phone: _____ email: _____

Applicant _____

Applicant/Spouse _____

Address _____

City _____ State ____ Zip code _____

Signature _____ Are you of Finnish descent? _____

- Annual membership, single, one vote \$50.00
- Annual membership, senior* or youth*, one vote \$25.00
- *Senior, over 65 years, youth under 30 years of age
- Annual membership, couple, two votes \$100.00
- Annual membership, family, one vote \$75.00
- Life membership, one vote \$500.00
- Life membership, senior, one vote (see membership for details)

Amount enclosed _____
Please make check payable to FCA and send to Finnish Center Association,
Membership, 35200 W. Eight Mile Road, Farmington Hills, MI 48335-5108
Recommended by: _____

Visit us on “Finnish Center and Hall” Facebook page and “like” us to get the latest updates!



FCA Senior Living

One and two bedroom rentals
Convenient, safe and affordable in highly desirable Farmington Hills, MI

Contact us at:
Tapiola Village (248) 471-3802
Freedom Square (248) 442-7250
www.fcaseniorhousing.org



THAYER-ROCK FUNERAL HOME

33603 Grand River,
Farmington, MI
(248) 474-4131
Paul N. Potti, Director